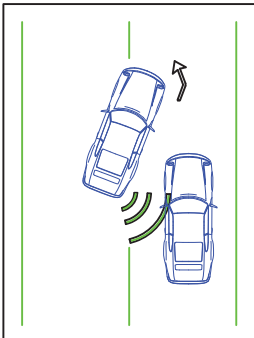


Blind Spot Detection System Manual

PTS-440BSD

Every vehicle has blind spots, and they can be a significant factor in road accidents. Blind spots are the areas that you cannot see when you look into your rear or side view mirrors. Looking over your shoulder when driving can be just as dangerous as you take your eyes off the road ahead. Parkmate's Blind Spot Detection System improves your driving safety by automatically detecting other vehicles that are in your blind spot areas, making changing lanes in all weather and lighting conditions much safer for you and your passengers.

Blind Spot Detection (lane changing assist)



- a. When driving forward, the four side sensors monitor the blind spots of side mirrors, interior warning lights show the side of the danger
- b. When obstacles are detected by the left or right sensor and your vehicle turns in the corresponding direction, the warning light will flash and the buzzer will emit a warning
- c. The sensor detection range is approximately 3 metres x 3 metres from the sensor

Setup switches on the Control Unit

Sensor Function	on (default)
	off
Response of the Sensor function	Normal (default)
	Enhanced
Active mode of the Sensor	All time (default)
	Turning
Sensitivity of the Sensor	Normal (default)
	Low

Setup switches on the Buzzer

