

CONTENTS

1.0 Introduction	2
2.0 Features	2
3.0 Precautions	3
4.0 What' in the Box	4
5.0 Product Overview	4
6.0 Display Screen Overview	4
7.0 Installation	5
8.0 Filter Replacement	7
9.0 FAQs	8
10.0 Specifications	8
11.0 Warranty Terms and Conditions	9

1.0 Introduction

Thank you for purchasing this Parkmate Air Purifier.

This product has been designed to be used in cars, trucks, office desk tops and small rooms. The unique design and appearance is suitable for most car cup holders and can also fit conveniently on office desk tops.

The air purifier will draw in unclean air from the back, and expel 3 stage filtered air from the front. It is designed to remove micro particles with up to PM 2.5, animal hair or dry skin cells, formaldehyde, smoke and other harmful gases while also removing odours.

We know you will breathe much easier thanks to the Parkmate Air Purifier.

2.0 Features

- The air purifier can filter floating particles such as hair, pollen, and dust in the air.
- The HEPA filter can filter micro particles such as microorganisms, viruses, and airborne matter to a PM2.5 rating, which is as small as 0.3mm in diameter.
- This air purifier uses high quality brushless fans. The fans have a 3 speed regulation function.
- A built in PM2.5 sensor can detect the air quality in real time and adjust the fan speed automatically. The PM2.5 level is shown on the LCD display to provide real time information and is also indicated by the coloured bar display.
- The inbuilt power supply features over voltage protection.
- The air purifier is designed to take in air from the back outlet, and expel air from the front.
- This air purifier is suitable for vehicles and small areas like sections of the living room, bedroom side table, home office, and other small living areas that need air purification.
- The air purifier will start automatically once power is applied to the USB-C port.

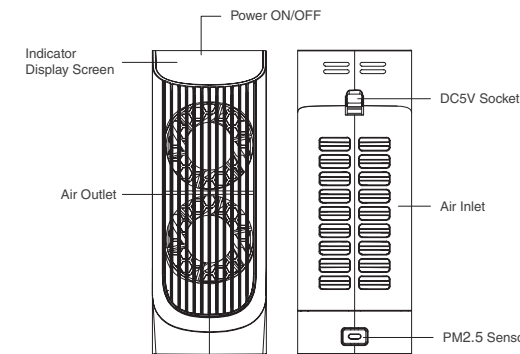
3.0 Precautions

- Do not use liquids like water, cleaning agents or flammable solvents to clean the air purifier.
- Please disconnect the power supply and use a soft cloth before cleaning.
- Keep air circulation unobstructed and do not cover the air purifier while it is powered on.
- For best results, please close your car window during use.
- Please adjust your car's air-conditioning power to the minimum while the air purifier is on.
- This air purifier is not a toy for children.
- For your own safety and those around you, do not open the filter cover of the air purifier when the power is on.
- To avoid injuries and accidents, please install the air purifier firmly in your car, and do not place it on the car dashboard.
- For your safety, do not adjust the air purifier while you are driving. If you need to adjust settings, please stop the car first.
- Do not use different types of power adapters. Please use only the accessories provided with this air purifier for operation.

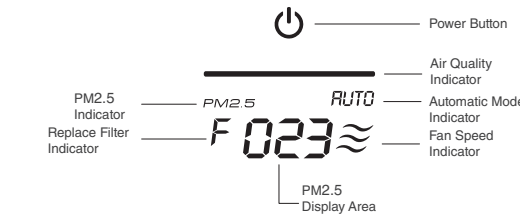
4.0 What' in the Box

- | | |
|----------------------------|----------------------|
| 1 x PM-208CPA Air Purifier | 1 x User Manual |
| 1 x Dual Port Car Charger | 1 x Type C USB Cable |

5.0 Product Overview



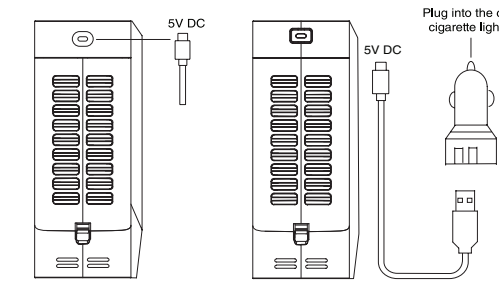
6.0 Display Screen Overview



7.0 Installation

This air purifier has been designed to fit into a standard size cup holder in your car. Once placed in the cup holder, follow these steps:

1. Plug the cable into the USB-C port of the air purifier (Figure 1).
2. Put the air purifier into the cup holder, plug the USB-A end of the cable into the supplied dual car charger. (Figure 2).



3. Plug the dual USB car charger into your vehicle's cigarette lighter socket to power the air purifier.

The default mode of the air purifier is set to AUTO. This means when you turn the air purifier on, the PM 2.5 Sensor will intelligently sense and detect the most useful fan speed needed to start effectively purifying your air. For example, if your car has a PM level of 2.5 or more, the fan speed will automatically increase.

Air Quality	Good	Moderate	Poor
Light Colour			
PM2.5 Level	0-75	76-150	>150

The air purifier's fan speed can also be controlled manually by following these steps:

1. Power on the air purifier by connecting the USB cable to the air purifier, and inserting the other end into either the cigarette lighter (as provided) or directly into your car's USB Port.
2. The default mode is 'AUTO' which will be shown by AUTO on the display.
3. Touch the Power symbol once. The air purifier will now enter into MANUAL mode. Manual mode will override AUTO mode, and the fan speed will be set to LOW, as indicated by one line in the display.
4. Press the power button again (while still in MANUAL mode) and the fan speed will increase to the MID range as indicated by two lines in the display.
5. Touch the power symbol. Now the fan speed will be its highest level, as indicated by three lines in the display.
6. To turn off the power of your air purifier, press the power button for 3-4 seconds.

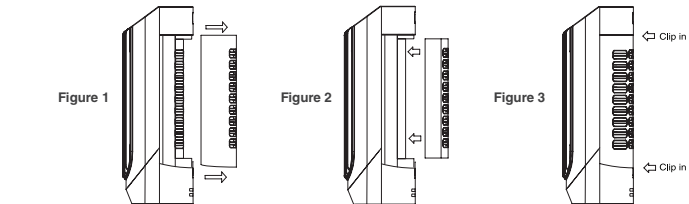
NOTE: The air purifier will automatically Power On when you turn on your car's ignition, even if you had turned the air purifier OFF previously.

8.0 Filter Replacement

This air purifier comes with CleanAir-Ai technology which has been included to detect and alert you to change the filter when it expires. Depending on the use of duration and the air quality, filters typically need to be changed every 3-5 months.

When the air purifier is turned ON, the red 'filter change' icon "F" will flicker on and off. However when the air purifier detects that filter needs to be replaced, the red "F" icon will continually be displayed. Once the filter is replaced, please reset the air purifier by pressing the power button for 10 seconds. It will beep three times to let you know the air purifier has been successfully reset.

1. Disconnect the power by removing the USB-C cable from the USB-C port at the rear of the air purifier.
2. Hold the air purifier in your hand and gently remove the back cover of the filter by moving the notch up and pulling it forward.
3. Remove the filter by pulling the tab attached on top of the filter.
4. To replace the filter, put the new filter in the back cover by aligning the top cover first and then insert the lower part and locking it in place.



9.0 FAQs

If your air purifier does not power on, please ensure the power supply is connected properly.

My air purifier is working but there is still odour circulating through my car?

Car odours are the result of many factors. By keeping this unit running continually, you will be able to purify the air and significantly reduce air pollutants in your car. Because some harmful gases are harder to remove from the air, try running your air purifier in high-speed mode. Please also check that your air filter is not due for replacement.

10.0 Specifications

Rated Voltage	5V DC
Rated Power	5 Watts
Applicable Area	10m ²
Max Air Volume	13m ³ / H
Product Size	75mm (W) x 68mm (D) x 200mm (H)

11.0 Warranty Terms and Conditions

Our goods come with guarantees that cannot be excluded under the Australian & New Zealand Consumer Law. You are entitled to a replacement or refund for a major failure and for compensation for any other reasonably foreseeable loss or damage. You are also entitled to have the goods repaired or replaced if the goods fail to be of acceptable quality and the failure does not amount to a major failure.

This warranty is provided in addition to your rights under the Australian & New Zealand Consumer Law.

Directed Electronics Australia Pty Ltd (Directed Electronics) warrants that this product is free from defects in material and workmanship for a period of 12 months from the date of purchase or for the period stated on the packaging. This warranty is only valid where you have used the product in accordance with any recommendations or instructions provided by Directed Electronics.

This warranty excludes defects resulting from alterations of the product, accident, misuse, abuse or neglect.

In order to claim the warranty, you must return the product to the retailer from which it was purchased or if that retailer is part of a National network, a store within that chain, along with satisfactory proof of purchase. The retailer will then return the goods to Directed Electronics. Directed Electronics will repair, replace or refurbish the product at its discretion. The retailer will contact you when the product is ready for collection. All costs involved in claiming this warranty, including the cost of the retailer sending the product to Directed Electronics, will be borne by you.

Directed Electronics Address: 115-119 Link Road Melbourne Airport, 3045 Victoria, Australia

Ph: +61 03 8331 4800 **Email:** service@parkmate.com.au

To view the complete Parkmate range or for details on how to contact us, please visit our website at www.parkmate.com.au | www.parkmatehd.co.nz

Indemnity

You agree to defend, indemnify and hold harmless Parkmate and its subsidiaries and affiliates from and against any and all claims, proceedings, injuries, liabilities, losses, costs and expenses (including reasonable legal fees), including but not limited to, claims alleging negligence, invasion of privacy, copyright infringement and/or trademark infringement against Parkmate and its subsidiaries and affiliates or the Parkmate services, relating to or arising out of your breach of any provision of these terms, your misuse of the Parkmate or Parkmate services, or your unauthorised modification or alteration of products or software.

Warranty and warranty disclaimer

Parkmate has a limited warranty whereby Parkmate warrants to you and only to you that the Parkmate products will be free from defects in materials and workmanship for one (1) year from the date of your purchase of the Parkmate product (unless a longer warranty period is required by law). The specifics of this Parkmate limited warranty are at <https://www.parkmate.com.au/warranty>

To the extent possible under governing law, other than the above product warranty for the Parkmate product, you understand and agree that the Parkmate services are provided on an "as is" and "as available" basis. Parkmate makes no warranty that the Parkmate services will meet your requirements or that use of the Parkmate services will be uninterrupted, timely, secure or error-free nor does Parkmate make any warranty as to the accuracy or reliability of any information obtained through the Parkmate services (including third party content), that any defects in the Parkmate services will be corrected or that the Parkmate products or Parkmate services will be compatible with any other specific hardware or service. Further, Parkmate does not warrant that the Parkmate services or the Parkmate servers that provide you with data and content are free of viruses or other harmful components. Parkmate also assumes no responsibility for and shall not be liable for any damages caused by viruses that may infect your Parkmate product.

You agree that Parkmate is not an insurer and that Parkmate is not providing you with insurance of any type. Any amounts that you pay Parkmate for the Parkmate service are not insurance premiums and are not related to the value of your vehicle or property, anyone else's property located in your vehicle or premises, or any risk of loss in your vehicle or at your premises. If you want insurance to protect against any risk of loss at your vehicle or premises, you will purchase it. In the event of any

loss, damage or injury, you will not look to Parkmate to compensate you or anyone else. You release and waive for yourself and your insurer all subrogation and other rights to recover against Parkmate arising as a result of the payment of any claim for loss, damage or injury.

Parkmate's equipment and services do not cause and cannot eliminate occurrences of certain events, including, but not limited to, vehicle accidents, property damage, lost property, theft of vehicle, theft of property. Parkmate makes no guarantee or warranty, including any implied warranty of merchantability or fitness for a particular purpose, that the Parkmate equipment and services provided will detect or avert such incidents or their consequences. Parkmate does not undertake any risk that you or your vehicle or property, or the person or property of others, may be subject to injury or loss if such an event occurs. The allocation of such risk remains with you, not Parkmate.

Other than the above product warranty for Parkmate products, Parkmate and its suppliers disclaim all warranties of any kind, whether express, implied, or statutory, regarding the Parkmate equipment and any associated app/service. Including any implied warranty of title, merchantability, fitness for a particular purpose, or non-infringement of third party rights. Because some jurisdictions do not permit the exclusion of implied warranties, the last sentence of this section may not apply to you. Parkmate hereby further expressly disclaims all liability for any claims for service failures that are due to normal product wear, product misuse, abuse, product modification, improper product selection or your non-compliance with any and all applicable federal, state or local laws. This warranty and warranty disclaimer give you specific legal rights, and you may have other rights that vary by state, province, or country. Other than as permitted by law, Parkmate does not exclude, limit or suspend other rights you have, including those that may arise from the nonconformity of a sales contract. For a full understanding of your rights you should consult the laws of your state, province, or country. For our Australian customers: please note that this warranty is in addition to any statutory rights in Australia in relation to your goods which, pursuant to the Australian Consumer Law, cannot be excluded.

Limitations of Parkmate liability

Under no circumstances will Parkmate be liable in any way for any content, including, but not limited to, the loss of content, any errors or omissions in any content, or any loss or damage of any kind incurred in connection with use of or exposure to any content posted, emailed, accessed, transmitted, or otherwise made available via the Parkmate app.

Parkmate liability for damages, especially for breach of duty or obligation, delay in performance, non-performance, or malperformance shall be precluded, except when these are due to negligent breaches of any significant contractual duty or obligation on the part of Parkmate. Any liability for negligence is limited to direct losses usually and typically foreseeable in such case. Should the claim for damages be based on willful or grossly negligent breach of contractual duty or obligation on the part of Parkmate, the preclusion and limitation of liability mentioned in the preceding sentences will not apply. The preceding preclusion and limitation of liability will also not apply to claims for damages arising out of loss of life, bodily injury or health impacts for which Parkmate may be liable, or for non-contractual liability.

Some states and countries do not allow the exclusion or limitation of incidental or consequential damages, so the above limitation or exclusion may not apply to you. Additionally, this provision is not intended to limit Parkmate's liability in the event of Parkmate's willful or intentional misconduct.

parkmate®

PM-208CPA Vehicle Air Purifier with CleanAir-Ai



USER MANUAL
YOUR SAFETY COMES FIRST™