

parkmate®

MCPK-502DVR

5.0" Touch Screen DVR Mirror with Full High Definition Front & Rear Cameras



USER MANUAL
YOUR SAFETY COMES FIRST™



CONTENTS

1.0	INTRODUCTION	7
2.0	CAUTION.....	7
2.1	Battery Warning	8
3.0	PACKAGE CONTENTS.....	9
4.0	PRODUCT OVERVIEW	10
5.0	GETTING STARTED	11
5.1	Inserting/Removing a Micro SD Card	11
5.2	Installing the MCPK-502DVR.....	12
6.0	CONNECTING THE MCPK-502DVR TO POWER.....	12
7.0	CONNECTING THE REVERSE CAMERA	14
7.1	Installation Guide	14
8.0	REVERSE CAMERA WIRING DIAGRAM	15
9.0	POWERING THE MIRROR DVR ON/OFF.....	15
10.0	PLAYING BACK RECORDED VIDEO ON A PC.....	17
11.0	INTERFACE NAVIGATION.....	18

11.1	Main Menu	18
11.2	Playback Interface.....	19
11.3	System Setting Menu	20
12.0	FREQUENTLY ASKED QUESTIONS	23
13.0	WARRANTY TERMS & CONDITIONS.....	25
14.0	NOTES.....	28

1.0 INTRODUCTION

Thank you for purchasing a Parkmate Mirror DVR. We are certain that our product will give you trouble free operation while providing you with a safety feature that enhances your driving experience. Our products, like most after-market safety enhanced devices, are designed to assist and aid the driver, not to replace the manual function of the person operating the vehicle. Please read through these instructions before attempting to install this product.

For the latest manual and product updates, please visit our website at **www.parkmate.com.au** or **www.parkmatehd.co.nz**

2.0 CAUTION

- Ensure you are using your Mirror DVR within your countries' road laws. Please make sure you are familiar with your local road legislation before use.
- Avoid leaving your Mirror DVR in direct sunlight for extended periods of time in an unventilated space.
- Please set time and date before you use this device to record.
- The notifications given by the Mirror DVR are suggestions only, please drive to the actual conditions.
- The system is to be used only for non-commercial use, within the limits permitted by the relevant laws.

- Avoid using the Mirror DVR in the vicinity of any devices that emit radio interference (eg. Microwave Ovens).
- It is considered normal operation for the Mirror DVR to get warm during use.

2.1 BATTERY WARNING

- Always power and charge the Mirror DVR using the provided 12/24V adapter. Improper charging of the Mirror DVR may result in failure of the internal battery.
- Never dismantle the Mirror DVR or expose the internal battery.
- Do not dispose of the Mirror DVR in fire.
- Dispose of the Mirror DVR observing local regulations being mindful of the internal battery.
- Do not attempt to replace or expose the internal battery.

3.0 PACKAGE CONTENTS



DVR Mirror



Rear Camera



12/24V Adapter



Rubber Fasteners



8M Rear Camera Cable



3M VHB Adhesive

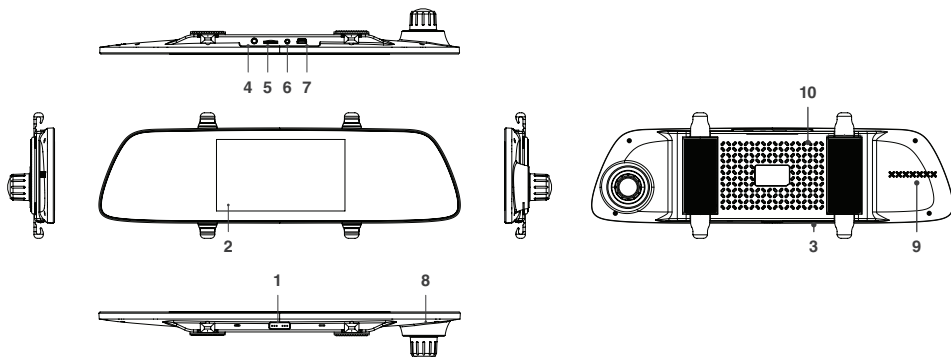


Rear Camera
Mounting Screws



User Guide

4.0 PRODUCT OVERVIEW



1. Power/Display Off Button
2. Touch Panel/Display Screen
3. MIC
4. GPS Port (Not applicable in this model)
5. Micro SD Card Slot
6. AV In (Rear Camera)

7. Power USB Port
8. Camera Lens
9. Speaker
10. Reset Key

*Note: Micro SD is not included and must be purchased separately.

MINI USB PORT	Connect to MINI USB cable for power. Connect to PC for data (Micro SD) transfer.
AV IN	Connect to the rear camera.
MICRO SD	Please use a Class 10 or higher rated micro SD card with a minimum capacity of 32GB and maximum capacity of 128GB.
GPS	Function N/A in this model.
SCREEN	5.0" touch screen.
POWER KEY	Long press for minimum 3 seconds to turn on/off. Short press to turn on/off screen, DVR will continue to record.

5.0 GETTING STARTED

5.1 INSERTING/REMOVING A MICRO SD CARD

With the Mirror DVR turned off and the screen facing towards you, insert the memory card with the text on the Micro SD card facing you. Push the memory card in until a click is heard.

To remove the memory card, ensure that the Mirror DVR is powered off, then push the memory card until a click is heard and then release the card to eject.

NOTE:

1. Do not remove or insert the memory card while the Mirror DVR is turned on as this may damage the memory card or corrupt the memory cards stored data.
2. Please use a Class 10 or higher rated micro SD card with a minimum capacity of 32GB and maximum capacity of 128GB.
3. Please format the Micro SD card before the initial use.
4. When removing the memory card, be careful as the card may eject quickly.
5. Micro SD Card is not included.

5.2 INSTALLING THE MCPK-502DVR

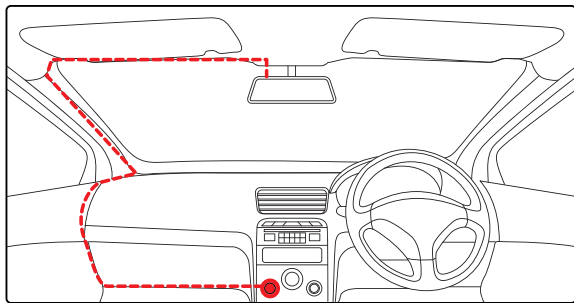
1. Loop the rubber fasteners over the top fastener clips.
2. Put the Mirror DVR in position on the front face of your existing rear view mirror ensuring that the camera lens clears the edge of your rear view mirror.
3. Loop the bottom rubber fasteners over the mirror and attach to the bottom fastener clips.
4. Add optional EVA PADS in-between the rear of the mirror and your original rear view mirror to provide more stability, if fitting is loose.

6.0 CONNECTING THE MCPK-502DVR TO POWER

Only use the included charger to power and charge the MCPK-502DVR.

1. Once the Mirror DVR is securely installed onto your vehicles rear view mirror, plug the 12/24V DC charger into your vehicle's cigarette lighter adapter or power source.

2. Run the cable along your vehicles console and windscreen and plug it into the Mirror DVR port marked with the USB icon.



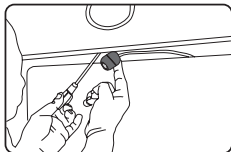
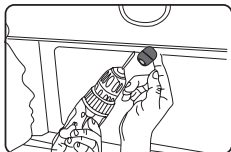
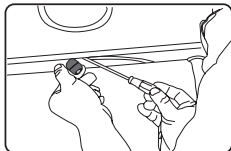
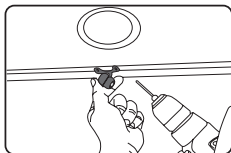
NOTE:

1. Make sure that the cameras view is not obstructed by any window tint or any other objects.
2. If your vehicle has side curtain airbags please be very careful when running any cables along your vehicle windows. Ensure you are not running cables past any of the airbags as this can prevent the airbags from deploying.

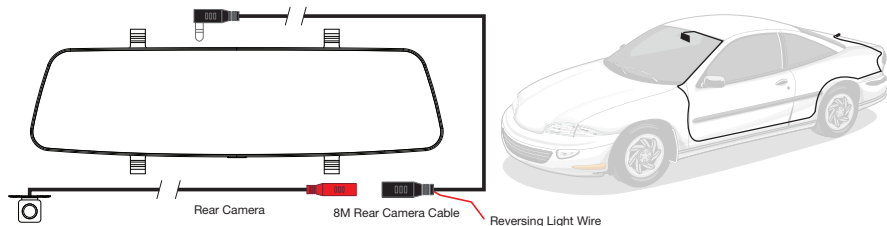
7.0 CONNECTING THE REVERSE CAMERA

7.1 INSTALLATION GUIDE

1. Select a flat and centred location near the number plate lamp at the rear of the vehicle to mount camera.
2. Attach tape to the bracket of the camera to hold the camera in position while installing, and drill two small holes, one for the first screw, the second to run the reverse camera cable through.
3. Use a screw driver to fix the first screw, leaving the screw loose enough to adjust the camera.
4. Insert the camera wire through the intended drilled hole checking the installation position.
5. Mark the position suitable for the second screw and drill a small hole for it.
6. Fix the second screw and securely tighten both screws.



8.0 REVERSE CAMERA WIRING DIAGRAM



9.0 POWERING THE MIRROR DVR ON/OFF

Connect the car charger to the power connector USB port found on the device, then connect the other end of the car charger to your car's cigarette lighter.

AUTO POWER ON/OFF


When the MCPK-502DVR is correctly installed and connected to your vehicles' 12/24V DC power supply, the Mirror DVR will automatically power on and start recording when the car's accessories are activated. The red dot on the screen will start flashing and recording automatically. The Mirror DVR will automatically stop recording and shut down when your vehicle is powered off. To get your vehicle in Park Mode, please ensure it is turned on by referring to setting on page 21 under System Setting Menu.

MANUAL POWER ON/OFF

Manual Power On

Press and hold the Power button at the bottom of the Mirror DVR until the Parkmate start up screen appears.

Manually Power Off

If the Mirror DVR is currently recording, please manually stop the recording by touching the  REC icon on the display. Then press and hold the Power button at the bottom of the MCPK-502DVR. After powering off the device please wait for 10 seconds before powering the Mirror DVR on again.

Resetting the Device

If the Mirror DVR does not function normally, try restarting the Mirror DVR. To reset the Mirror DVR with a flattened paper clip, press the reset button on the back of the Mirror DVR. Reset will restore Mirror DVR to factory settings.

NOTE BEFORE FIRST TIME USE

- Be sure to insert the SD card before powering up the device. Format the SD card before you start recording for the first time.








10.0 PLAYING BACK RECORDED VIDEO ON A PC

To playback video files on your PC it is recommended to connect the Micro SD card (not included) directly to your PC using either a USB Micro SD card reader (not included) or if your PC has a SD card slot, a Micro SD/SD Card converter (not included). Once the Micro SD card is connected it should appear as a removable storage device. It is recommended that you transfer video files that you want to playback to a folder on your computer before attempting to playback. This will reduce any delay in playback.


11.0 INTERFACE NAVIGATION









11.1 MAIN MENU

Touch on the 5.0" display to open the main menu.


ICON	DESCRIPTION	FEATURE
	Record	Touch to turn on/off recording.
	Photo	Touch to take a photo.
	Microphone	Touch to turn on/off audio recording.
	Lock	Touch during recording to lock the current file being recorded. Locked file will not be over recorded.
	Display mode	Touch to switch between Views Front and rear PIP Rear and front PIP Front full view Rear full view
	Playback	Touch to open playback menu
	System setting	Touch to open system settings menu.

11.2 PLAYBACK INTERFACE

Touch on the 5.0" display to open main menu, then touch  to open playback interface.

ICON	DESCRIPTION	FEATURE
	Return	Touch to return to main menu.
	Lock	Touch to lock the current file being recorded.
	Delete	Touch to delete the selected file.
	Front video	Touch to play videos recorded by front camera.
	Back video	Touch to play videos recorded by back camera.
	Locked front video	Touch to play locked front camera videos.
	Locked rear video	Touch to play locked back camera videos.
	Image	Touch to see photos.

11.3 SYSTEM SETTING MENU

Touch on the display screen to open main menu, then touch  to open the system setting menu.

DESCRIPTION	FEATURE
Resolution	Touch to set recording resolution: FHD 30fps/ HD 30fps. High resolution increases the size of the video files. Default: FHD 30fps
Loop recording	Touch to set loop recording time. Loop recording allows you to set the duration that the camera will record before creating a new clip. Options: 1min/ 3 mins/ 5mins. Default: 3 mins
Exposure	Touch to set exposure setting for the camera. Exposure is used to manually control the light sensitivity settings Options -2,-1,0,1,2. Default: 0
ADAS	Lane departure warning system (LDWS) is a mechanism designed to warn the driver when the vehicle begins to move out of its lane. Default: OFF

SYSTEM SETTING MENU CONT'

DESCRIPTION	FEATURE
Auto LCD off	<p>Touch to change the auto LCD off setting. Setting the screen time out will set the time after which the screen will switch off automatically while the DVR will continue recording.</p> <p>Options: 10 Seconds / 15 Seconds / 30 Seconds / 1 Minute</p> <p>Default 10 Seconds</p>
G-sensor	<p>Touch to change the settings of the inbuilt G-Sensor. The G-Sensor monitors your vehicle against impact detecting forces and will automatically protect the current recording in the event of a collision. Turn off or adjust the sensitivity of the built in G-Sensor.</p> <p>Options: Off / High / Middle / Low</p> <p>Default: Low</p>
Park mode	<p>Touch to set Park mode on/off. Park Mode operates off the internal battery and detects any activity from the built in G-Sensor once you have parked your vehicle. If an impact is detected, the Mirror DVR will power up and record a clip.</p> <p>Options: On / Off</p> <p>Default: Off</p>

SYSTEM SETTING MENU CONT'

DESCRIPTION	FEATURE
Microphone	Touch to turn on/ off internal microphone. Turning off will mute the voice on the recorded footage. Options : On/ Off Default: On
Format SD card	Touch to format SD card.
Language	Touch to change the preferred language.
Volume	Touch to change the sound output from the inbuilt speaker. Turning off will mute. Default: On
Display Mode	To change the default view of the LCD Screen. Options: Front Camera/ Rear Camera /PIP A/PIP B Default: Rear Camera
Format Reminder	DVR will give reminder to format SD Card. Options: OFF/15 Days /30 Days/ 60 Days Default: 30 Days

SYSTEM SETTING MENU CONT'

Date/Time	Touch to change the date and time settings which will be watermarked onto recorded footage. Then touch the date/time displayed on the right side. This will open up the menu to input date/time. Press up and down arrow to select and press OK to move to next digit.
Factory reset	Touch to change all the settings to Default.
Storage	Touch to get the information of the SD card.
FW Version	Touch to get the firmware version.

12.0 FREQUENTLY ASKED QUESTIONS

1. My mirror DVR mount or power adaptor has failed?

In the event of any accessory failing due to manufacturing defect during the warranty period or should you require a replacement accessory, please contact the Parkmate support team at service@directed.com.au. Replacement accessories can be also purchased at www.parkmate.com.au or www.parkmatehd.co.nz

2. My mirror DVR displays a SD card read error message?

To ensure seamless operation of your Parkmate car mirror DVR, we strongly recommend that you refer to your owners manual under specifications to which Micro SD is required. As a minimum it should be a class 10 standard, brand from a well known manufacturer and also cards which contain a multi layer NAND Type.

3. My mirror DVR displays a card full message?

The park mode function can be utilised and triggered to record events when your vehicle is parked and powered off. When the camera detects motion or any shock movement it will record a short write protected file which cannot be deleted by the loop record function. Periodically it would be recommended to manually format the Micro SD card as it will release occupied protected data.

4. My mirror DVR appears to power up when my vehicle is stationary?

In the event of the G-Sensor motion function being activated, files that are recorded during this time will automatically write protect to the Micro SD card. These files are generally short in duration and cannot be deleted unless the Micro SD is formatted.

5. My mirror DVR battery will run out of power when in use?

When intending to use the mirror DVR for recording whilst driving, the device must be plugged into its designated power adaptor provided. The inbuilt battery provides the camera with reserve power during park mode and also to retain memory and date / time settings.

6. My mirror DVR LCD display is turning off during operation?

The screen saver and display off function will turn the dash camera display off during the recording process to prevent driver distraction. This at times can cause some confusion as it may appear the device is powered off but will continue to seamlessly record continuously. If this does not rectify the issue be sure that the auto power off function is set to off.

7. My mirror DVR seems to freeze during operation?

Majority of operation function freeze can be related back to using the incorrect Micro SD used or defective flash memory. To check this concern Parkmate suggest to try another compatible card for recovery.

13.0 WARRANTY TERMS & CONDITIONS

Our goods come with guarantees that cannot be excluded under the Australian & New Zealand Consumer Law. You are entitled to a replacement or refund for a major failure and for compensation for any other reasonably foreseeable loss or damage. You are also entitled to have the goods repaired or replaced if the goods fail to be of acceptable quality and the failure does not amount to a major failure.

This warranty is provided in addition to your rights under the Australian & New Zealand Consumer Law.

Directed Electronics warrants that this product is free from defects in material and workmanship for a period of 12 months from the date of purchase or for the period stated on the packaging. This warranty is only valid where you have used the product in accordance with any recommendations or instructions provided by Directed Electronics.

This warranty excludes defects resulting from alterations of the product, accident, misuse, abuse or neglect.

In order to claim the warranty, you must return the product to the retailer from which it was purchased or if that retailer is part of a National network, a store within that chain, along with satisfactory proof of purchase. The retailer will then return the goods to Directed Electronics. Directed Electronics will repair, replace or refurbish the product at its discretion. The retailer will contact you when the product is ready for collection. All costs involved in claiming this warranty, including the cost of the retailer sending the product to Directed Electronics, will be borne by you.

Directed Electronics Address: 115-119 Link Road Melbourne Airport, 3045 Victoria. Australia

Ph: +61 03 8331 4800 **Email:** service@parkmate.com.au

14.0 NOTES

parkmate[®]
YOUR SAFETY COMES FIRST[™]



All Images, Information and Content are Copyright © 2020
Directed Electronics Australia Pty Ltd. All Rights Reserved.
www.parkmate.com.au | www.parkmatehd.co.nz

DIRECTED
AUSTRALIA & NZ

www.directed.com.au
www.directed.co.nz